



**FRSA**  
Fire Rescue Safety Australia

**seek**<sup>®</sup>  
thermal

# PRODUCT DATA SHEET

## AttackPRO Kit Thermal Imaging Camera

Designed with firefighters for firefighters, the AttackPRO™ thermal imaging camera offers an unmatched combination of image quality, durability, and price.

With its high resolution and wide field of view, AttackPRO is the new decision-making weapon of choice for captains and commanding officers. Mixed-gain pixel technology eliminates the visual confusion and delay of switching between highgain and low-gain modes. AttackPRO lets you clearly see the fire and the crew, all in one detailed image.

The kit includes the AttackPRO camera, 2 batteries, and a charging dock.

Designed and Manufactured in the USA with Global Components. Thermal sensor designed and manufactured by Seek in Santa Barbara, CA USA

Resolutions	320 x 240
Field of View	57° x 42°
Durability	IP67 waterproof, 2 meter drop
Detection	-20°C to 550°C (-4°F to 1022°F)
Imaging	Mixed Gain with SV1
Flashlight	300 Lumen LED

### KEY FEATURES

- **Mixed Gain with SV1 Image Optimization**

See the hottest and coolest regions of the scene simultaneously without freezing or switching gain modes; details enhanced with SV1

- **Durable, Waterproof Design**

Durable and reliable design built with IP67 rating and 2 meter drop resistance

- **Wide, 57-Degree Field of View**

Easily scan a large area to identify hazards or victims in seconds

- **Long-Lasting Rechargeable Battery**

Greater than 6 hours of continuous thermal imaging

- **Simple Operation. Purpose-Built for the Fire Ground**

One button thermal operation, no confusing menus or settings, Get the job done efficiently and consistently

### BENEFITS

- **Decision Making on Command**

Direct Firefighters, water, and resources with expedited tactical precision

- **Robust Personal TIC**

Equip the entire department with the first affordable decision making TIC

- **See Through Smoke. Flashlight Optional.**

300 lumen LED flashlight available at the touch of a button

- **Search and Rescue**

Find victims and self-rescue faster with a reliable personal TIC

- **Execute 360 Size-ups & Overhaul Faster**

When seconds count, a Seek decision-making TIC saves time and lives



## TECHNICAL SUMMARY

SPECIFICATIONS	DESCRIPTION
Thermal Sensor	320 x 240 (76,800 pixels)
Detection Distance	12 inches to 1,000 feet
Field of View	57° HFOV, 42° VFOV
Temperature Range	-4 to 1,022°F (-20 to 550°C)
Operating Temp	-4 to 131°F (-20 to 55°C) - no time limit up to 302°F (150°C) - max 15 min up to 500°F (260°C) - max 5 min
Frame Rate	> 25 Hz Fast Frame
IP Rating	IP67 Waterproof
Flashlight	300 Lumen LED
Display	3.5" Color with Corning® Gorilla® Glass
Thermal Sensitivity	< 35 mK with SV1
User Interface	On device 2 tactile button operation
Temp. Display Scale	Fahrenheit or Celsius
Image modes	2 Options (TiBASIC-default, and TiBASIC+)
Storage Media	NA
Battery	>6 Hours Thermal Imaging (w/o flashlight); >3hrs (with thermal AND flashlight)

## 300 LUMEN LED LIGHT



Seek AttackPRO combines powerful thermal imaging insight and a bright LED flashlight in an intuitive, two button interface

## USER INTERFACE

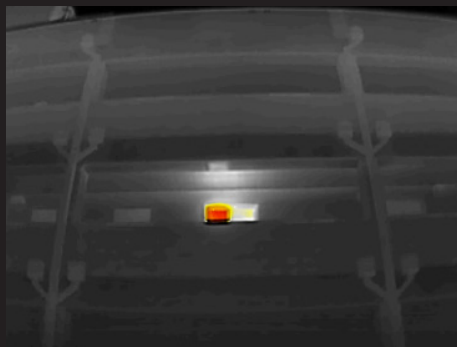


**Ti BASIC**  
Maintain your situational awareness with a simple and decluttered display showing greyscale and colored regions



**Ti BASIC +**  
Enhance your tactics with a spot temp readout while still maintaining greyscale and colored regions

## THERMAL APPLICATIONS



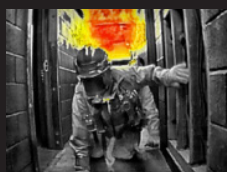
360 SIZE UP



FIRE ATTACK



OVERHAUL



## DESKTOP BATTERY CHARGER



## TECHNICAL SUMMARY

SPECIFICATIONS	DESCRIPTION
AC INPUT	100-240 VAC 50/60 HZ, 0.5 A
SUPPLY VOLTAGE	5VDC
POWER RATING	10W
ENVIRONMENTAL	INTENDED FOR INDOOR USE
INCLUDED IN THE BOX	DESKTOP CHARGER CRADLE POWER SUPPLY INCLUDING AC PLUGS FOR US, EU, UK

## BATTERY Li-ion



### TECHNICAL SUMMARY

SPECIFICATIONS	DESCRIPTION
BATTERY MATERIAL	LITHIUM ION
NOMINAL VOLTAGE	3.63 V
NOMINAL CAPACITY	4900 mAh
OPERATING TEMPERATURE RANGE	DURING DISCHARGE: -20°C TO 60°C DURING CHARGING: 0°C TO 45°C
WEIGHT	115g
SIZE	170 X 45 X 43 mm
COMPATIBLE WITH	FQ-PPAX FQ-PPNX